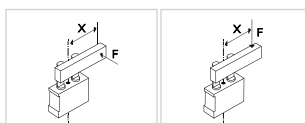


ULA40\_\_ \_AAK0

4 STROKE

4

020 = 20 mm  
040 = 40 mm



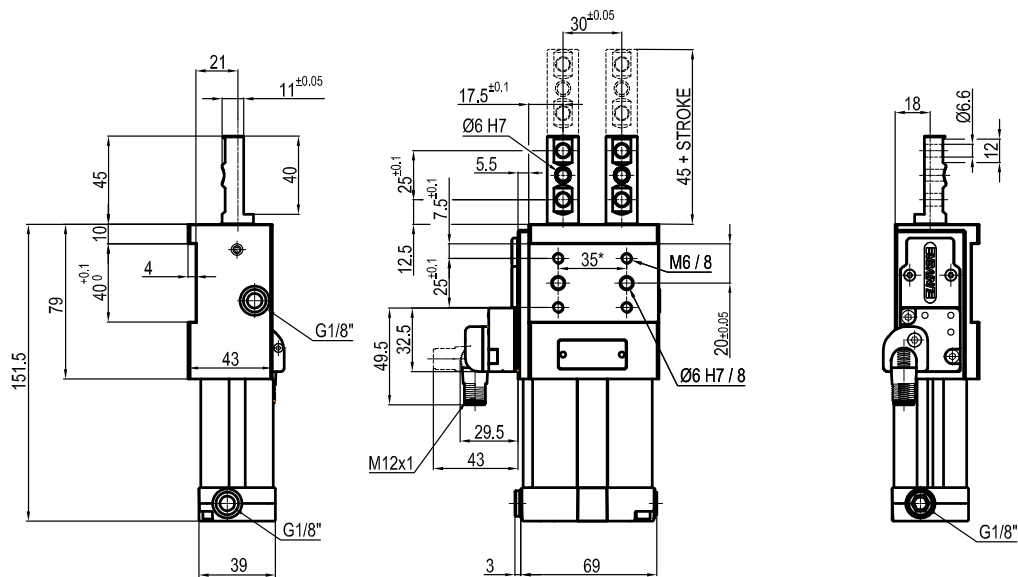
Bore Ø	Max. pull force 0,5 MPa	Max. push force 0,5 MPa	Max. torque 3 Nm X=100 mm	Max. deflection moment 6 Nm X=100 mm	Weight
40 mm	550 N	600 N	±0,1 mm	±0,03 mm	1,3 Kg

Min./Max. operating pressure: **0,4 / 0,6 MPa**  
 Operating temperature: **5° ÷ 45° C**  
 Strokes in mm: **20 - 40**  
 Electronic sensor with M12 swivel connector, from 0° to 90°  
 Supply voltage: **10 ÷ 30 Vdc**  
 IP code: **IP 65**  
 Pneumatic ports on both sides

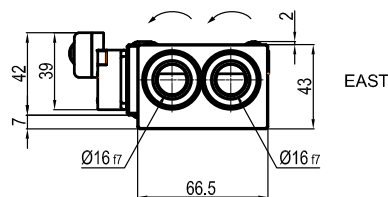
\* : TOLERANCE BETWEEN DOWELS ± 0,02, BETWEEN SCREW HOLES ± 0,1

Subject to technical modifications without notice

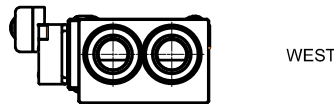
Rev. 00 31.07.20



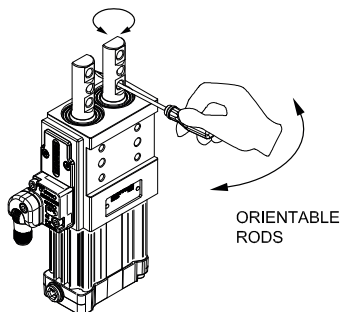
ORIENTABLE RODS



EAST



WEST

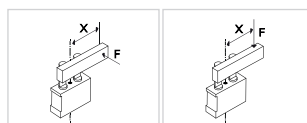


ULA40\_\_ASK0

4 STROKE

4

020 = 20 mm  
040 = 40 mm



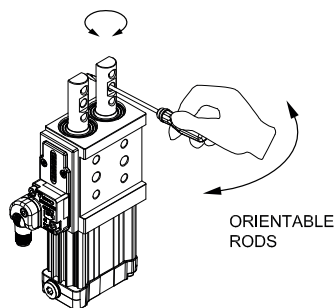
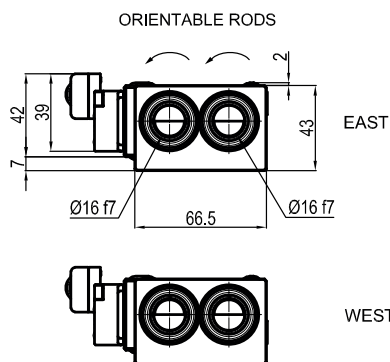
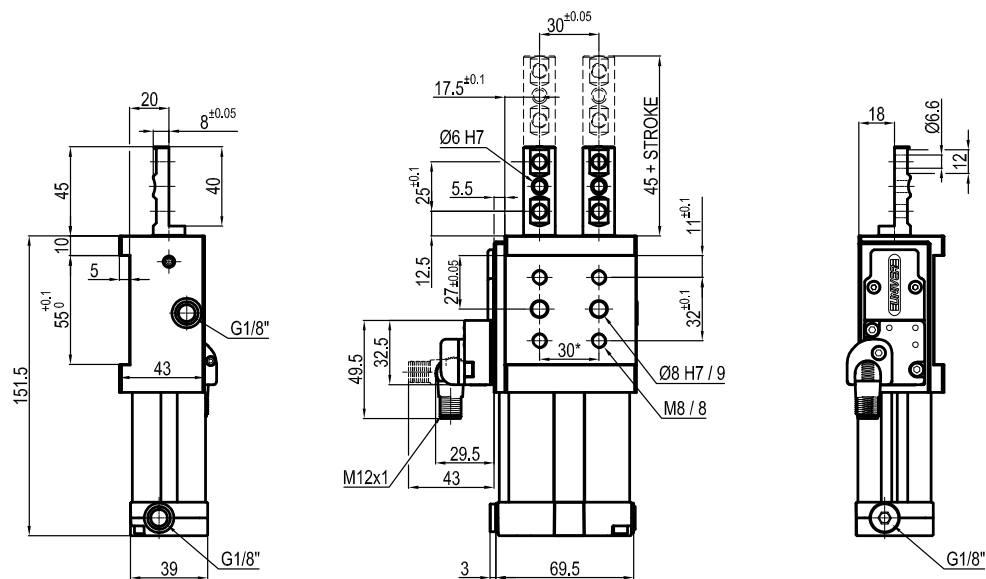
Bore Ø	Max. pull force 0,5 MPa	Max. push force 0,5 MPa	Max. torque 3 Nm X=100 mm	Max. deflection moment 6 Nm X=100 mm	Weight
40 mm	550 N	600 N	±0,1 mm	±0,03 mm	1,3 Kg

Min./Max. operating pressure: **0,4 / 0,6 MPa**  
 Operating temperature: **5° ÷ 45° C**  
 Strokes in mm: **20 - 40**  
 Electronic sensor with M12 swivel connector, from 0° to 90°  
 Supply voltage: **10 ÷ 30 Vdc**  
 IP code: **IP 65**  
 Pneumatic ports on both sides

\* : TOLERANCE BETWEEN DOWELS ± 0,02, BETWEEN SCREW HOLES ± 0,1

Subject to technical modifications without notice

Rev. 01 06.11.19

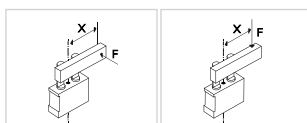


ULA40\_\_GAK0

4 STROKE

4

020 = 20 mm  
040 = 40 mm



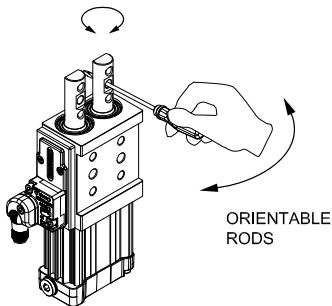
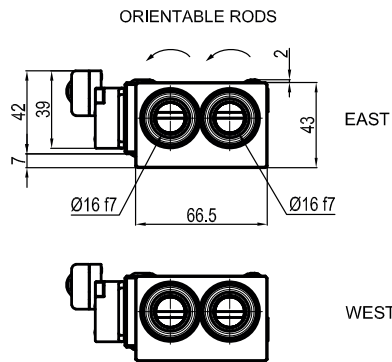
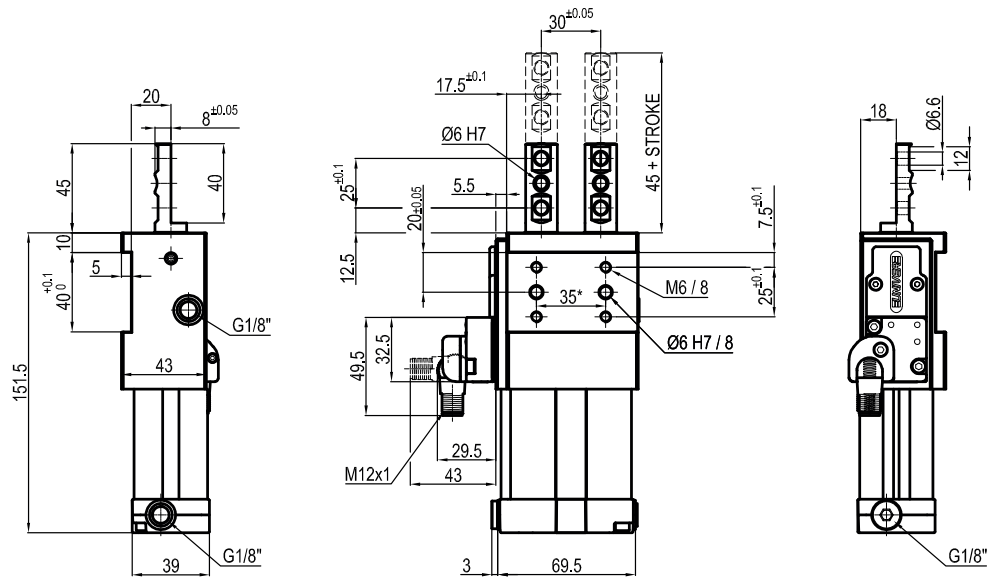
Bore Ø	Max. pull force 0,5 MPa	Max. push force 0,5 MPa	Max. torque 3 Nm X=100 mm	Max. deflection moment 6 Nm X=100 mm	Weight
40 mm	550 N	600 N	±0,1 mm	±0,03 mm	1,3 Kg

Min./Max. operating pressure: **0,4 / 0,6 MPa**  
 Operating temperature: **5° ÷ 45° C**  
 Strokes in mm: **20 - 40**  
 Electronic sensor with M12 swivel connector, from 0° to 90°  
 Supply voltage: **10 ÷ 30 Vdc**  
 IP code: **IP 65**  
 Pneumatic ports on both sides

\* : TOLERANCE BETWEEN DOWELS ± 0,02, BETWEEN SCREW HOLES ± 0,1

Subject to technical modifications without notice

Rev. 00 31.07.20


**ULA40\_\_GSK0**
**4 STROKE**
**4**

 020 = 20 mm  
 040 = 40 mm

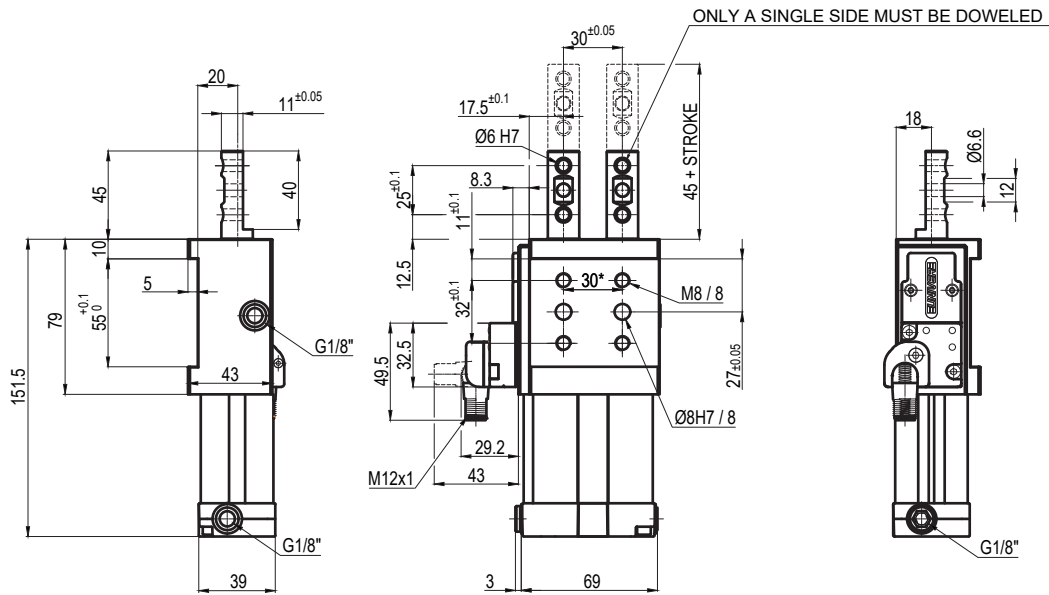
Bore Ø	Max. pull force 0,5 MPa	Max. push force 0,5 MPa	Max. torque 3 Nm X=100 mm	Max. deflection moment 6 Nm X=100 mm	Weight
40 mm	550 N	600 N	±0,1 mm	±0,03 mm	1,3 Kg

Min./Max. operating pressure: **0,4 / 0,6 MPa**  
 Operating temperature: **5° ÷ 45° C**  
 Strokes in mm: **20 - 40**  
 Electronic sensor with M12 swivel connector, from 0° to 90°  
 Supply voltage: **10 ÷ 30 Vdc**  
 IP code: **IP 65**  
 Pneumatic ports on both sides

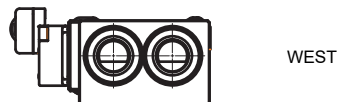
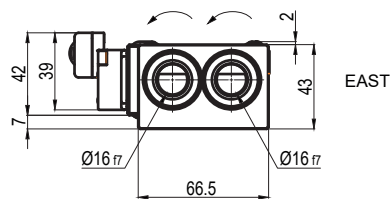
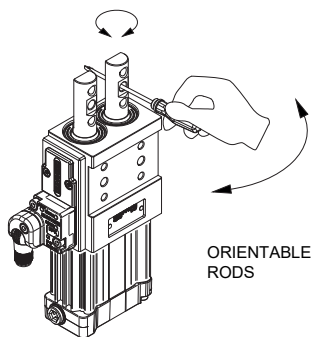
\*: TOLERANCE BETWEEN DOWELS ± 0,02, BETWEEN SCREW HOLES ± 0,1

Subject to technical modifications without notice

Rev. 00 31.07.20



ORIENTABLE RODS

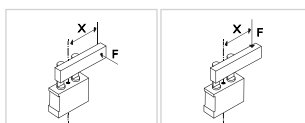


ULA40\_\_NAKO

4 STROKE

4

020 = 20 mm  
040 = 40 mm



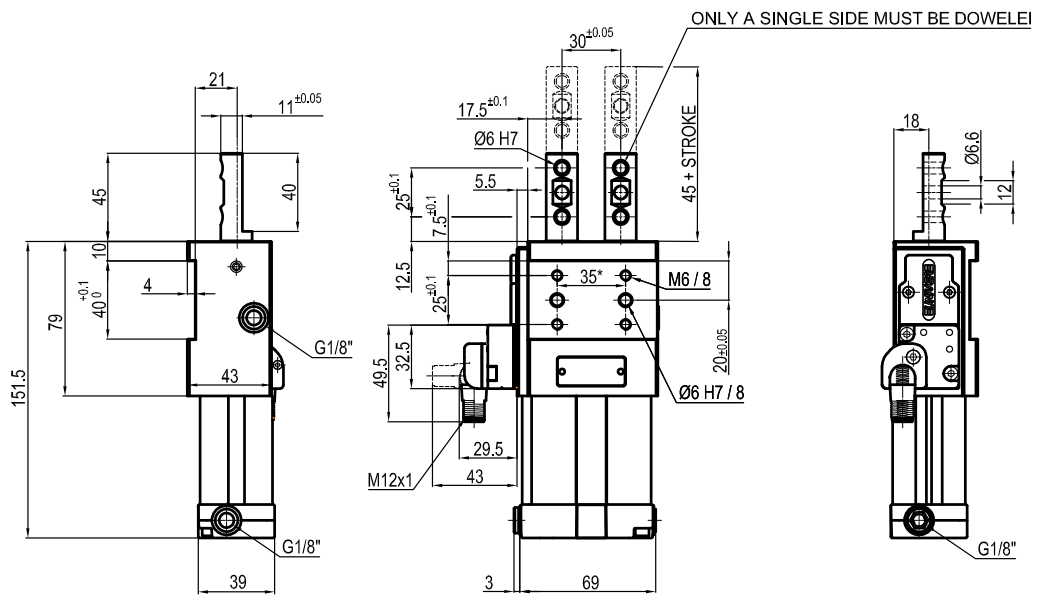
Bore Ø	Max. pull force 0,5 MPa	Max. push force 0,5 MPa	Max. torque 3 Nm X=100 mm	Max. deflection moment 6 Nm X=100 mm	Weight
40 mm	550 N	600 N	±0,1 mm	±0,03 mm	1,3 Kg

Min./Max. operating pressure: **0,4 / 0,6 MPa**  
 Operating temperature: **5° ÷ 45° C**  
 Strokes in mm: **20 - 40**  
 Electronic sensor with M12 swivel connector, from 0° to 90°  
 Supply voltage: **10 ÷ 30 Vdc**  
 IP code: **IP 65**  
 Pneumatic ports on both sides

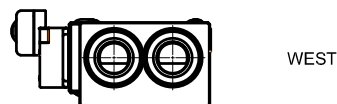
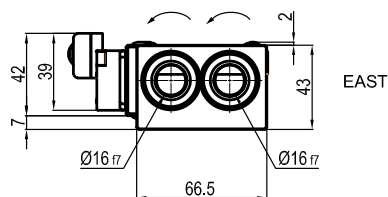
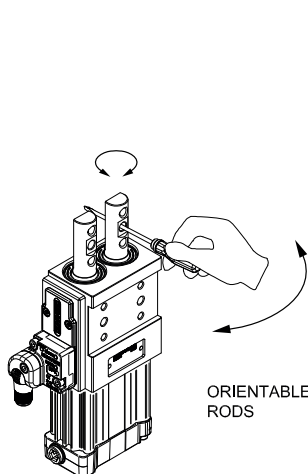
\* : TOLERANCE BETWEEN DOWELS ± 0,02, BETWEEN SCREW HOLES ± 0,1

Subject to technical modifications without notice

Rev. 00 21.10.19



ORIENTABLE RODS



ULA40\_\_NSKO

4 STROKE

4

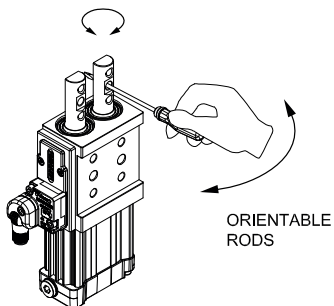
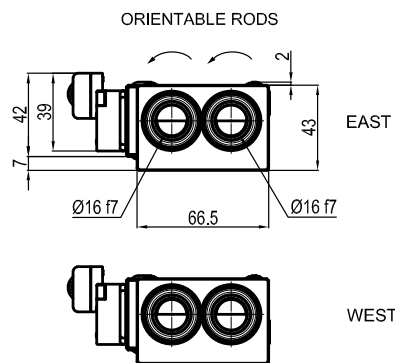
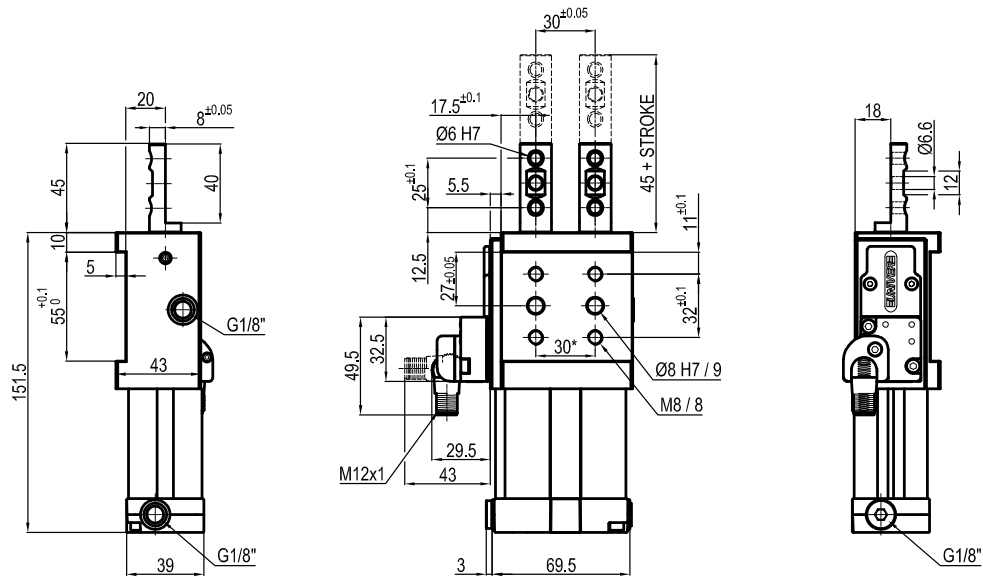
020 = 20 mm  
040 = 40 mm

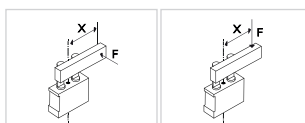
Bore Ø	Max. pull force 0,5 MPa	Max. push force 0,5 MPa	Max. torque 3 Nm X=100 mm	Max. deflection moment 6 Nm X=100 mm	Weight
40 mm	550 N	600 N	±0,1 mm	±0,03 mm	1,3 Kg

Min./Max. operating pressure: **0,4 / 0,6 MPa**  
 Operating temperature: **5° ÷ 45° C**  
 Strokes in mm: **20 - 40**  
 Electronic sensor with M12 swivel connector, from 0° to 90°  
 Supply voltage: **10 ÷ 30 Vdc**  
 IP code: **IP 65**  
 Pneumatic ports on both sides

\* : TOLERANCE BETWEEN DOWELS ± 0,02, BETWEEN SCREW HOLES ± 0,1

Subject to technical modifications without notice


**ULA40\_\_PAKO**
**4 STROKE**
**4**

 020 = 20 mm  
 040 = 40 mm


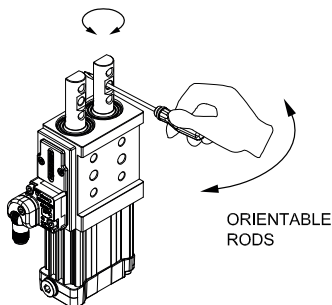
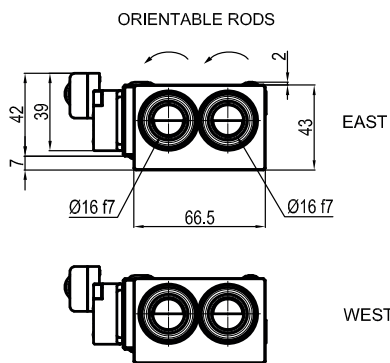
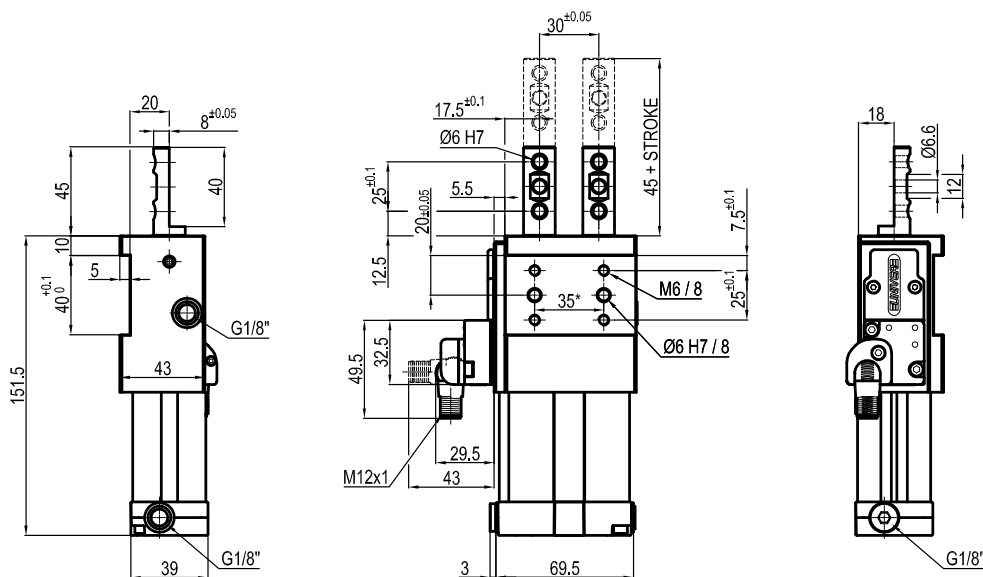
Bore Ø	Max. pull force 0,5 MPa	Max. push force 0,5 MPa	Max. torque 3 Nm X=100 mm	Max. deflection moment 6 Nm X=100 mm	Weight
40 mm	550 N	600 N	±0,1 mm	±0,03 mm	1,3 Kg

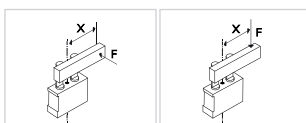
Min./Max. operating pressure: **0,4 / 0,6 MPa**  
 Operating temperature: **5° ÷ 45° C**  
 Strokes in mm: **20 - 40**  
 Electronic sensor with M12 swivel connector, from 0° to 90°  
 Supply voltage: **10 ÷ 30 Vdc**  
 IP code: **IP 65**  
 Pneumatic ports on both sides

\*: TOLERANCE BETWEEN DOWELS ± 0,02, BETWEEN SCREW HOLES ± 0,1

Subject to technical modifications without notice

Rev. 00 31.07.20


**ULA40\_\_PSK0**
**4 STROKE**
**4**

 020 = 20 mm  
 040 = 40 mm


Bore Ø	Max. pull force 0,5 MPa	Max. push force 0,5 MPa	Max. torque 3 Nm X=100 mm	Max. deflection moment 6 Nm X=100 mm	Weight
40 mm	550 N	600 N	±0,1 mm	±0,03 mm	1,3 Kg

 Min./Max. operating pressure: **0,4 / 0,6 MPa**  
 Operating temperature: **5° ÷ 45° C**  
 Strokes in mm: **20 - 40**  
 Electronic sensor with M12 swivel connector, from 0° to 90°  
 Supply voltage: **10 ÷ 30 Vdc**  
 IP code: **IP 65**  
 Pneumatic ports on both sides

\*: TOLERANCE BETWEEN DOWELS ± 0,02, BETWEEN SCREW HOLES ± 0,1

Subject to technical modifications without notice

Rev. 00 31.07.20