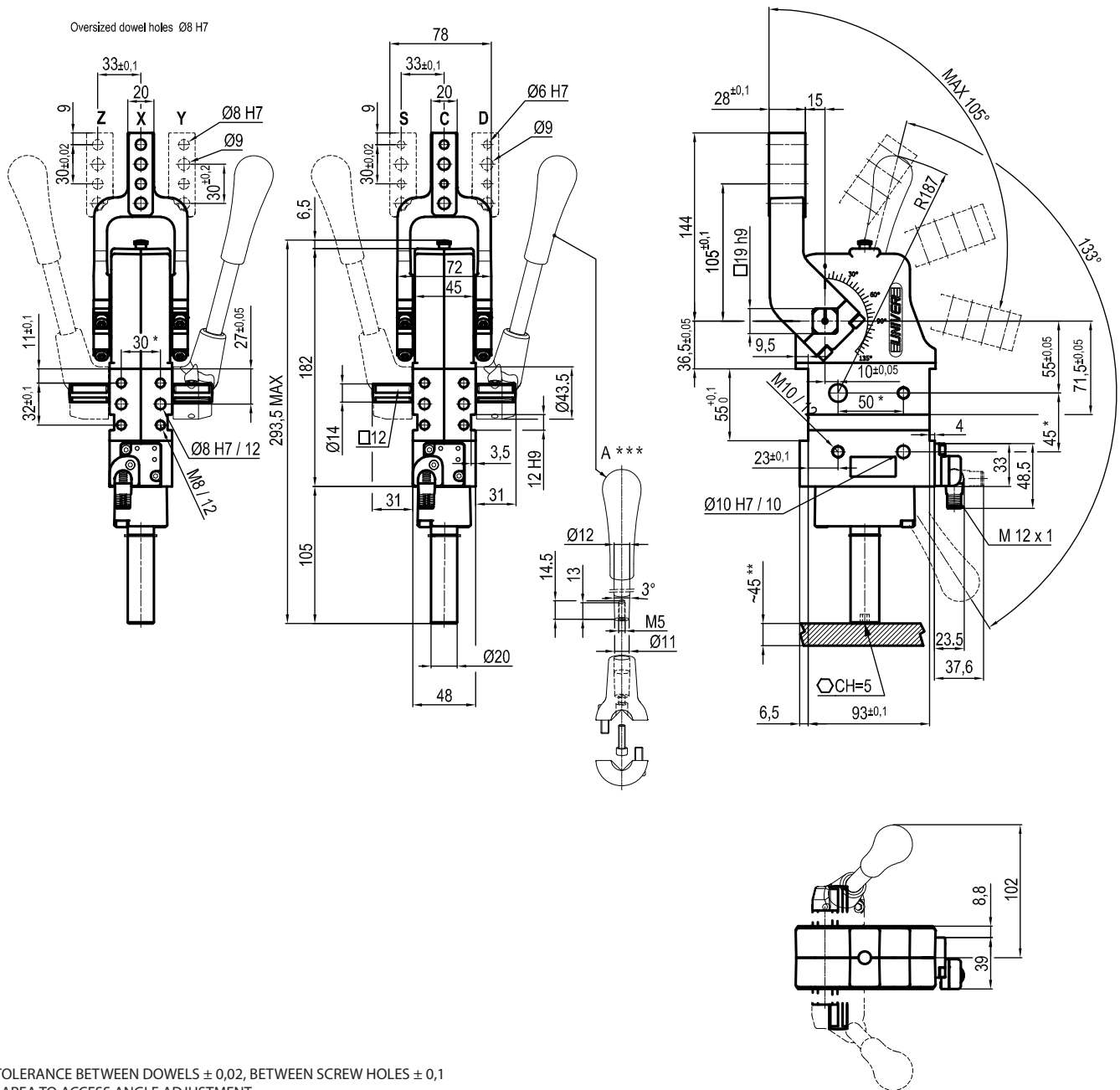


* : TOLERANCE BETWEEN DOWELS $\pm 0,02$, BETWEEN SCREW HOLES $\pm 0,1$
 ** : AREA TO ACCESS ANGLE ADJUSTMENT
 *** : DIMENSIONS TO BE RESPECTED IN CASE OTHER MANUAL LEVERS ARE USED

Bore \varnothing	Holding moment	Clamping moment	Weight (clamping arm not included)
50	1750 Nm	420 Nm	2,8 Kg

Operating temperature: $5^{\circ} \div 45^{\circ} \text{C}$
 Opening angle: **adjustable**
 Without arm
 With manual lever
 Electronic sensor with M12 swivel connector, from 0° to 90°
 Supply voltage: **$10 \div 30 \text{Vdc}$**
 IP code: **IP 65**

Subject to technical modifications without notice



* : TOLERANCE BETWEEN DOWELS ± 0,02, BETWEEN SCREW HOLES ± 0,1

** : AREA TO ACCESS ANGLE ADJUSTMENT

***: DIMENSIONS TO BE RESPECTED IN CASE OTHER MANUAL LEVERS ARE USED

UCBL4500 _ _ K0
7 ARM STYLE

8 ARM TYPE

7 8

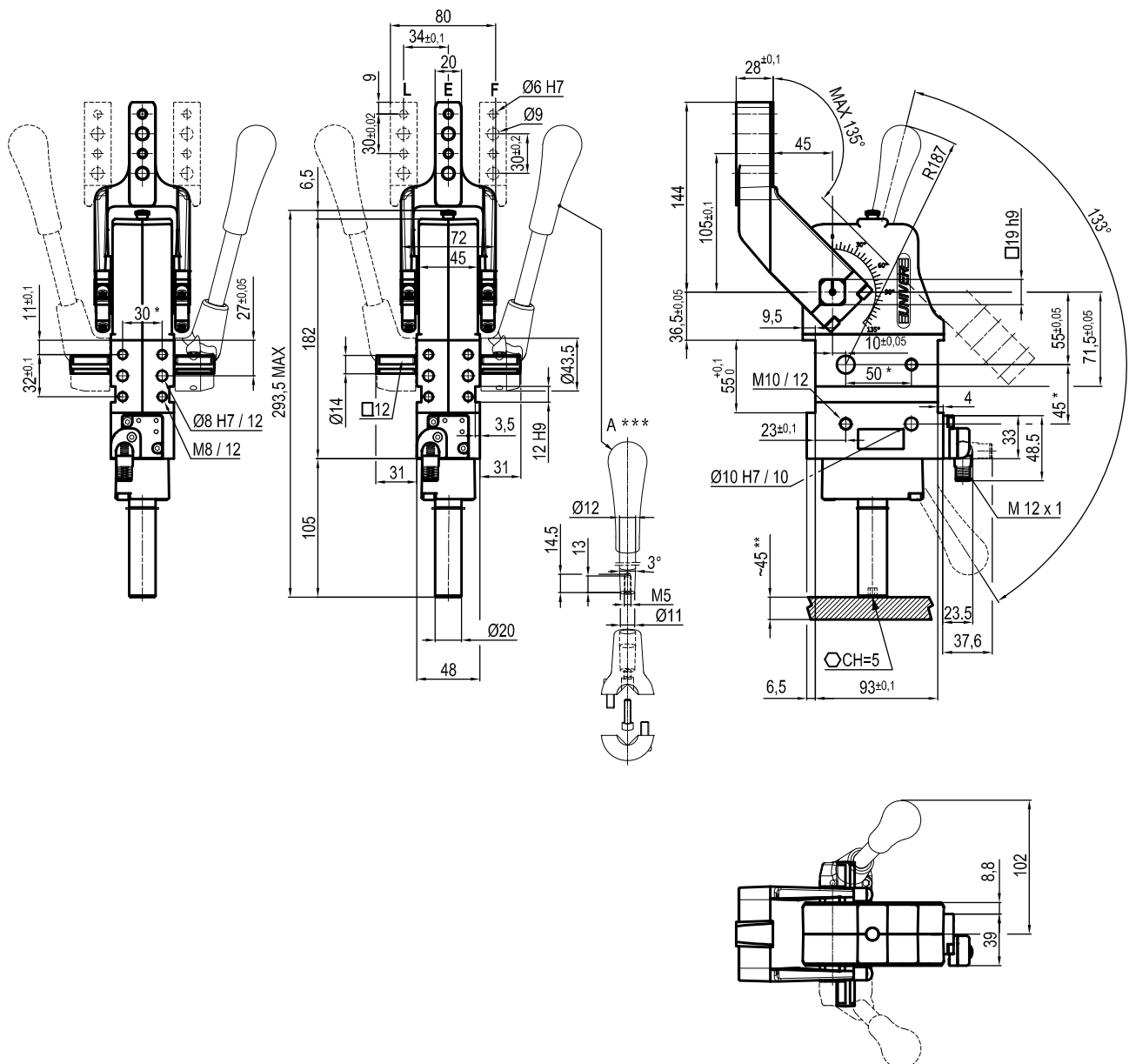
C = Central
D = Right
S = Left

A = Aluminium
S = Steel

Size	Holding moment	Clamping moment	Weight (clamping arm not included)
50	1750 Nm	420 Nm	2,8 Kg

Operating temperature: 5°÷ 45° C
Opening angle: **adjustable from 0° to 105°**
Arm position: **180°**
With manual lever
Electronic sensor with M12 swivel connector, from 0° to 90°
Supply voltage: **10 ÷ 30 Vdc**
IP code: **IP 65**

Subject to technical modifications without notice



* : TOLERANCE BETWEEN DOWELS $\pm 0,02$, BETWEEN SCREW HOLES $\pm 0,1$

** : AREA TO ACCESS ANGLE ADJUSTMENT

***: DIMENSIONS TO BE RESPECTED IN CASE OTHER MANUAL LEVERS ARE USED

UCBL450O __ K0
7 ARM STYLE

8 ARM TYPE

7 8

E = Central
F = Right
L = Left

A = Aluminium
S = Steel

Size	Holding moment	Clamping moment	Weight (clamping arm not included)
50	1750 Nm	420 Nm	2,8 Kg

Operating temperature: 5° ÷ 45° C
Opening angle: **adjustable from 0° to 135°**

Arm position: **180°**

With manual lever

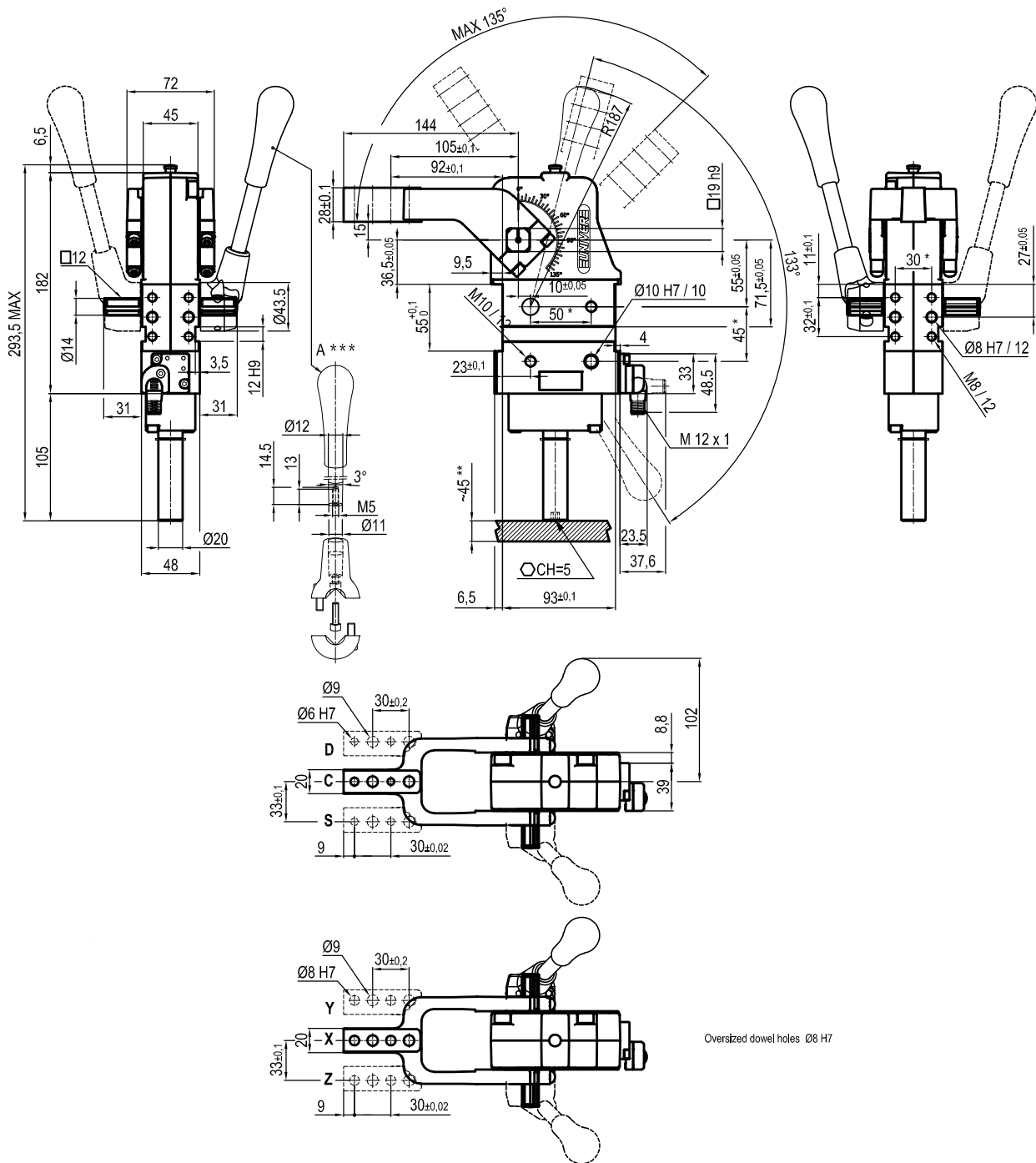
Electronic sensor with M12 swivel connector, from 0° to 90°

Supply voltage: **$10 \div 30$ Vdc**

IP code: **IP 65**

Subject to technical modifications without notice

Rev. 01 26.01.22



Oversized dowel holes Ø8 H7

*: TOLERANCE BETWEEN DOWELS $\pm 0,02$, BETWEEN SCREW HOLES $\pm 0,1$
 **: AREA TO ACCESS ANGLE ADJUSTMENT
 ***: DIMENSIONS TO BE RESPECTED IN CASE OTHER MANUAL LEVERS ARE USED

UCBL450V __ K0
7 ARM STYLE

8 ARM TYPE

7 8

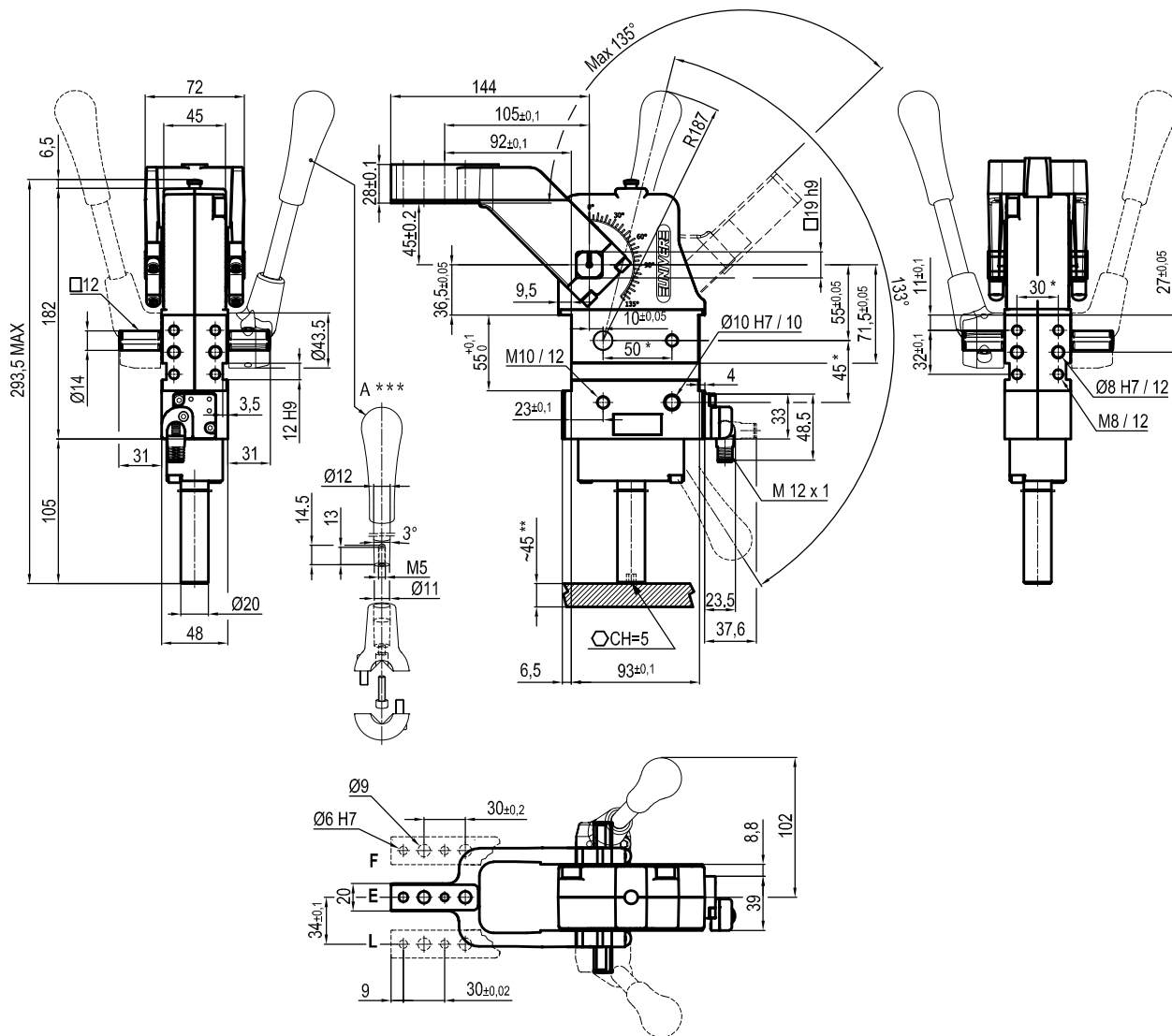
C = Central
 D = Right
 S = Left

A = Aluminium
 S = Steel

Bore \varnothing	Holding moment	Clamping moment	Weight (clamping arm not included)
50	1750 Nm	420 Nm	2,8 Kg

Operating temperature: $5^{\circ} \div 45^{\circ} \text{C}$
 Opening angle: **adjustable from 0° to 135°**
 Arm position: **90°**
 With manual lever
 Electronic sensor with M12 swivel connector, from 0° to 90°
 Supply voltage: **$10 \div 30 \text{Vdc}$**
 IP code: **IP 65**

Subject to technical modifications without notice



*: TOLERANCE BETWEEN DOWELS $\pm 0,02$, BETWEEN SCREW HOLES $\pm 0,1$
 **: AREA TO ACCESS ANGLE ADJUSTMENT
 ***: DIMENSIONS TO BE RESPECTED IN CASE OTHER MANUAL LEVERS ARE USED

UCBL450V __ _ K0
7 ARM STYLE

8 ARM TYPE

7 8

 E= Central
 F= Right
 L= Left

 A= Aluminium
 S= Steel

Bore \varnothing	Holding moment	Clamping moment	Weight (clamping arm not included)
50	1750 Nm	420 Nm	2,8 Kg

Operating temperature: $5^{\circ} \div 45^{\circ} \text{C}$
 Opening angle: **adjustable from 0° to 135°**
 Arm position: **90°**
 With manual lever
 Electronic sensor with M12 swivel connector, from 0° to 90°
 Supply voltage: **$10 \div 30 \text{Vdc}$**
 IP code: **IP 65**

Subject to technical modifications without notice