

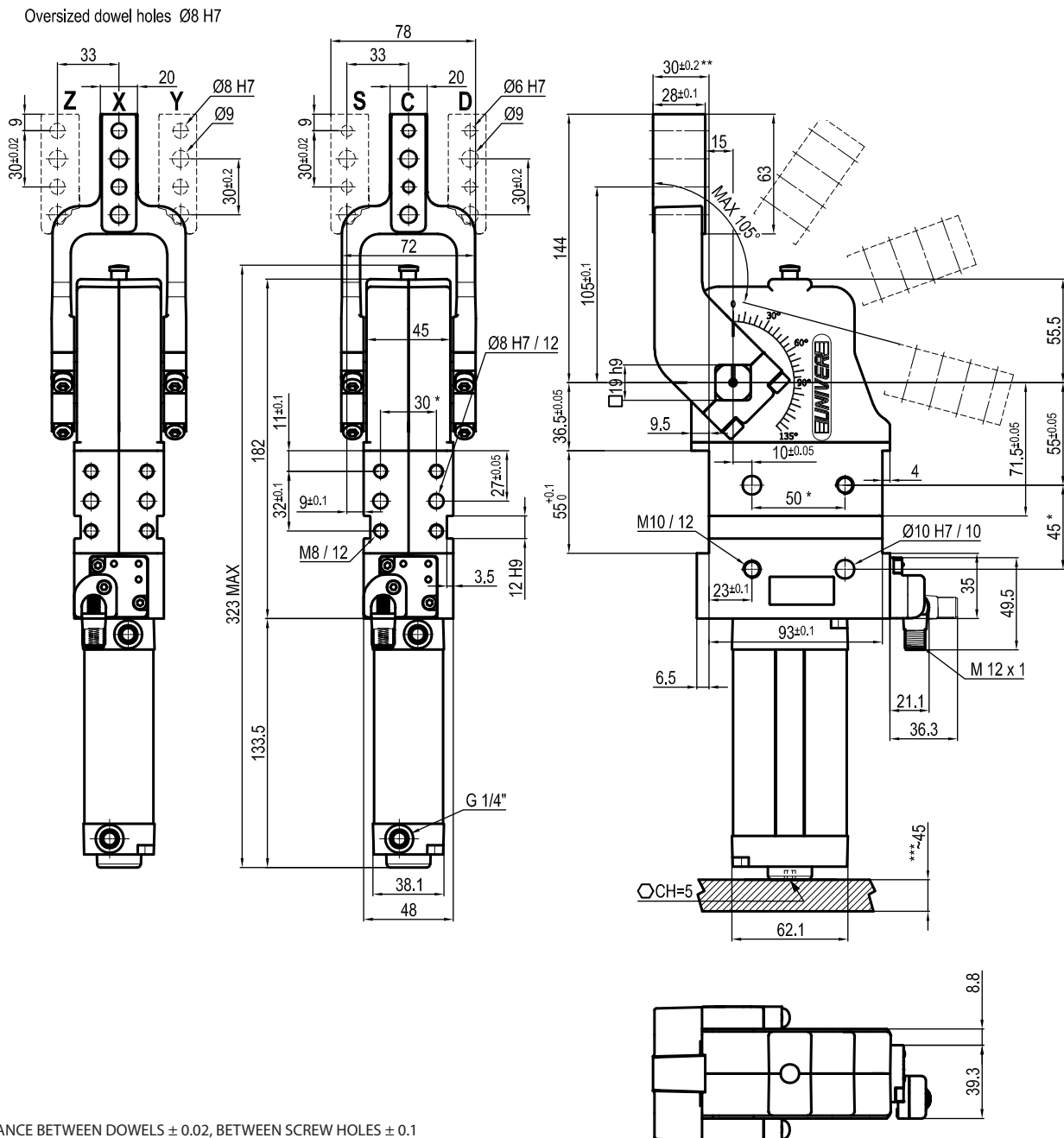
* : TOLERANCE BETWEEN DOWELS ± 0.02 , BETWEEN SCREW HOLES ± 0.1
 ** : AREA TO ACCESS ANGLE ADJUSTMENT

Size \varnothing	Cylinder bore \varnothing	Holding moment	Clamping moment (0,5 MPa)	Weight (clamping arm not included)
50 mm	40 mm	1250 Nm	170 Nm	2,3 Kg

Min./Max. operating pressure: **0,4 / 0,6 MPa**
 Operating temperature: **5° ÷ 45° C**
 Opening angle: **adjustable**
 Without arm
 Electronic sensor with M12 swivel connector, from 0° to 90°
 Supply voltage: **10 ÷ 30 Vdc**
 IP code: **IP 65**
 Pneumatic ports on both sides

Subject to technical modifications without notice

Rev. 02 27.01.22



* : TOLERANCE BETWEEN DOWELS ± 0.02 , BETWEEN SCREW HOLES ± 0.1

** : TOLERANCE AT 80 mm FROM PIVOT POINT

*** : AREA TO ACCESS ANGLE ADJUSTMENT

UABP500 __ K0
6 7
6 ARM STYLE

C = Central
D = Right
S = Left

7 ARM TYPE

A = Aluminium
S = Steel

Size \varnothing	Cylinder bore \varnothing	Holding moment	Clamping moment (0,5 MPa)	Weight (clamping arm not included)
50 mm	40 mm	1250 Nm	170 Nm	2,3 Kg

Min./Max. operating pressure: **0,4 / 0,6 MPa**

Operating temperature: **5° ÷ 45° C**

Opening angle: **adjustable from 0° to 105°**

Arm position: **180°**

Electronic sensor with M12 swivel connector, from 0° to 90°

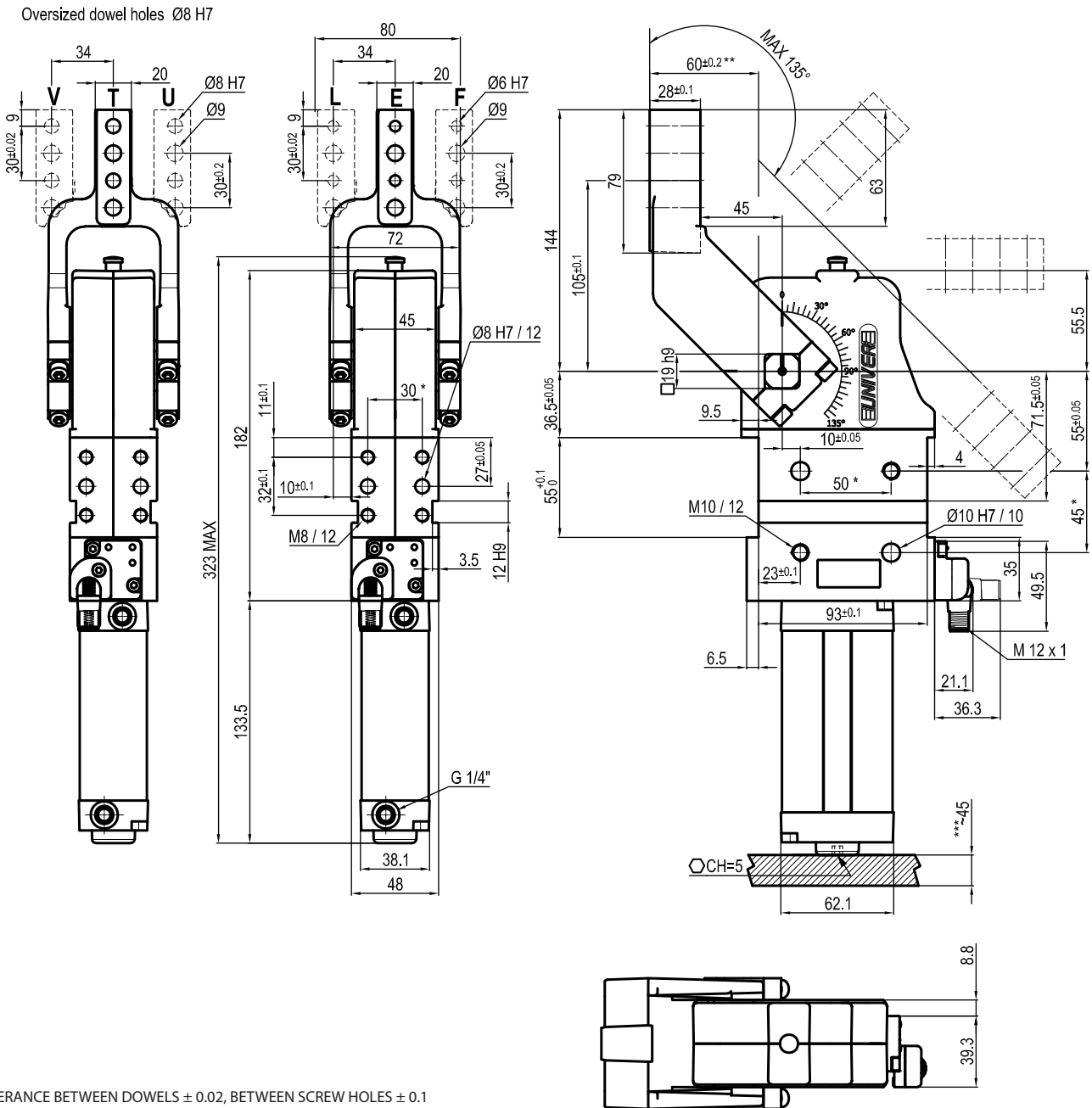
Supply voltage: **10 ÷ 30 Vdc**

IP code: **IP 65**

Pneumatic ports on both sides

Subject to technical modifications without notice

Rev. 02 27.01.22



* : TOLERANCE BETWEEN DOWELS ± 0.02, BETWEEN SCREW HOLES ± 0.1

** : TOLERANCE AT 80 mm FROM PIVOT POINT

*** : AREA TO ACCESS ANGLE ADJUSTMENT

UABP500 __ K0
6 7
6 ARM STYLE

E = Central
F = Right
L = Left

7 ARM TYPE

A = Aluminium
S = Steel

Size Ø	Cylinder bore Ø	Holding moment	Clamping moment (0,5 MPa)	Weight (clamping arm not included)
50 mm	40 mm	1250 Nm	170 Nm	2,3 Kg

Min./Max. operating pressure: **0,4 / 0,6 MPa**

Operating temperature: **5° ÷ 45° C**

Opening angle: **adjustable from 0° to 135°**

Arm position: **180°**

Electronic sensor with M12 swivel connector, from 0° to 90°

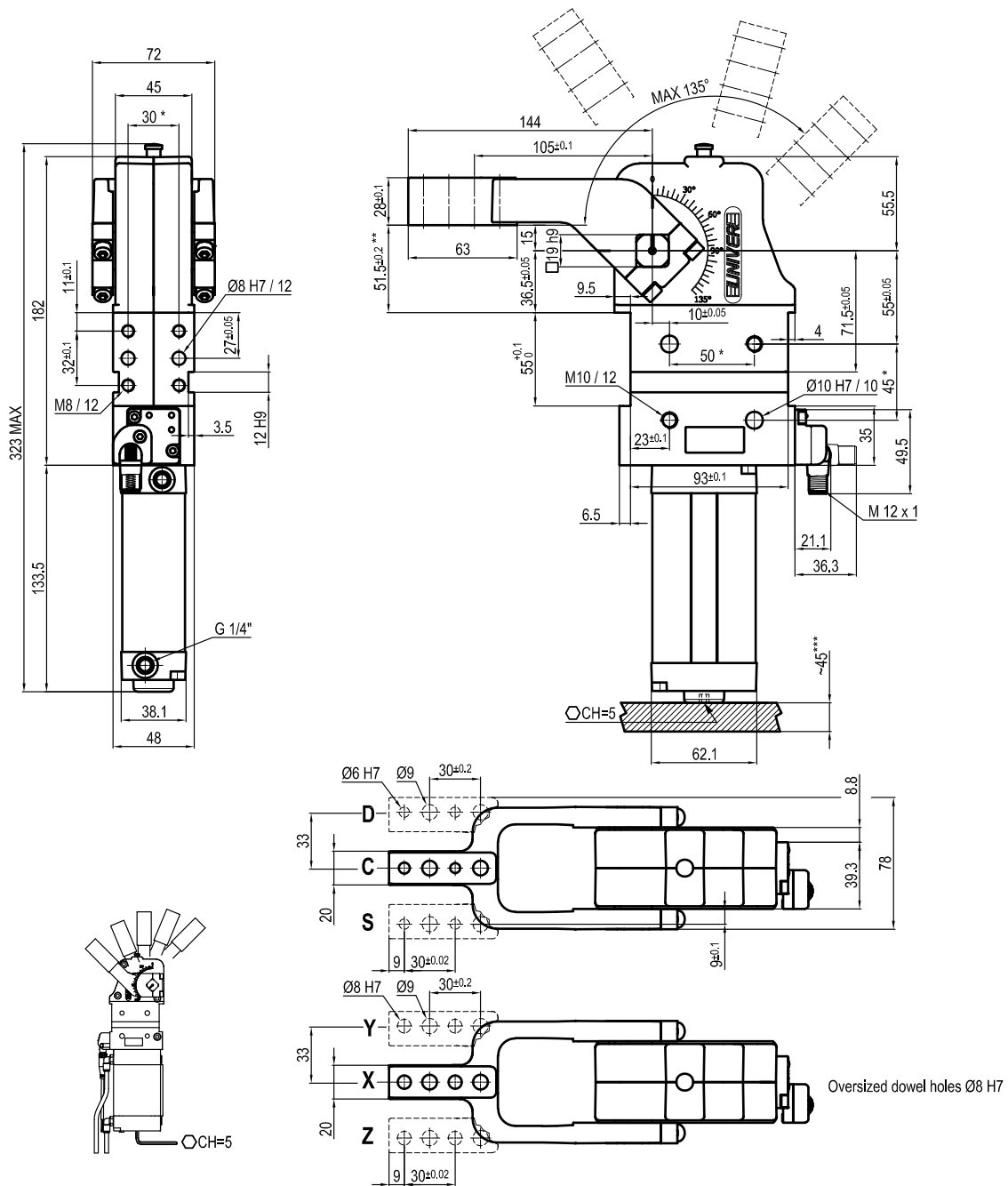
Supply voltage: **10 ÷ 30 Vdc**

IP code: **IP 65**

Pneumatic ports on both sides

Subject to technical modifications without notice

Rev. 02 27.01.22



* : TOLERANCE BETWEEN DOWELS ± 0.02 , BETWEEN SCREW HOLES ± 0.1

** : TOLERANCE AT 80 mm FROM PIVOT POINT

*** : AREA TO ACCESS ANGLE ADJUSTMENT

UABP50V __ K0

6 ARM STYLE

7 ARM TYPE

6 7

C = Central
D = Right
S = Left

A = Aluminium
S = Steel

Size \varnothing	Cylinder bore \varnothing	Holding moment	Clamping moment (0,5 MPa)	Weight (clamping arm not included)
50 mm	40 mm	1250 Nm	170 Nm	2,3 Kg

Min./Max. operating pressure: **0,4 / 0,6 MPa**

Operating temperature: **5° ÷ 45° C**

Opening angle: **adjustable from 0° to 135°**

Arm position: **90°**

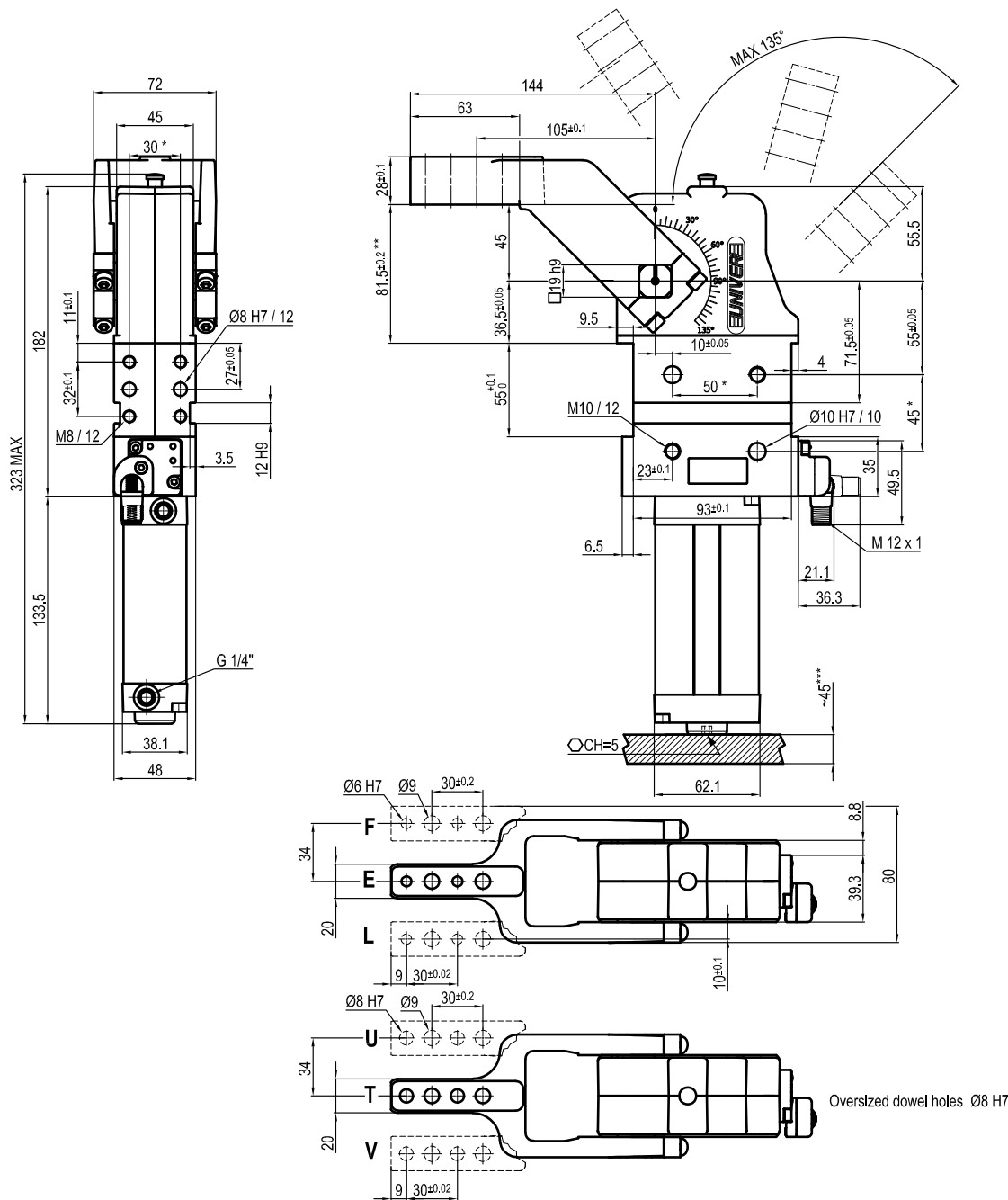
Electronic sensor with M12 swivel connector, from 0° to 90°

Supply voltage: **10 ÷ 30 Vdc**

IP code: **IP 65**

Pneumatic ports on both sides

Subject to technical modifications without notice



* : TOLERANCE BETWEEN DOWELS ± 0.02 , BETWEEN SCREW HOLES ± 0.1

** : TOLERANCE AT 80 mm FROM PIVOT POINT

*** : AREA TO ACCESS ANGLE ADJUSTMENT

UABP50V __ _ K0

6 7

6 ARM STYLE

E = Central
F = Right
L = Left

7 ARM TYPE

A = Aluminium
S = Steel

Size \varnothing	Cylinder bore \varnothing	Holding moment	Clamping moment (0,5 MPa)	Weight (clamping arm not included)
50 mm	40 mm	1250 Nm	170 Nm	2,3 Kg

Min./Max. operating pressure: **0,4 / 0,6 MPa**

Operating temperature: **5° ÷ 45° C**

Opening angle: **adjustable from 0° to 135°**

Arm position: **90°**

Electronic sensor with M12 swivel connector, from 0° to 90°

Supply voltage: **10 ÷ 30 Vdc**

IP code: **IP 65**

Pneumatic ports on both sides

Subject to technical modifications without notice