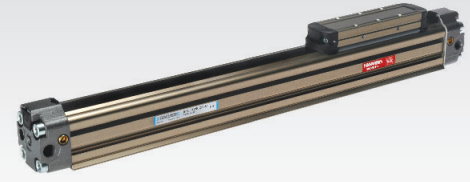


1

CHARACTERISTICS

Ambient temperature	-20 ÷ 80 °C
Fluid	filtered air, with or without lubrication
Working pressure	3 ÷ 10 bar
End-caps	die-cast light alloy
Barrel	anodized aluminium
Piston	aluminium
Guide slide	acetalic resin
Piston seal	NBR
Shock absorber seals	mechanical
Cushionings	adjustable on both sides (standard supplied)
Magnet	upon request

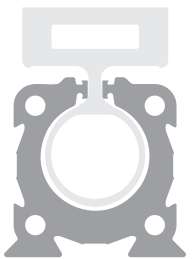


Available ATEX version upon request
 CE Ex II 2Gc IIC T5 II 2Dc T100°C

CODIFICATION KEY

S	1	0	1	1	2	5	0	8	5	0		
1	2	3	4	5	6	7	8					

1 Series S1 = Ø 16÷50 mm - Rodless Cylinders standard version	2 Carriage type 0 = Standard carriage 2 = Medium carriage (except for Ø16) 3 = Long carriage (except for Ø16)	3 Left end-cap supply port 0 = No supply port (both chambers are supplied from the right end-cap) 1 = Side supply port (except for Ø16) 2 = Bottom supply port (except for Ø16) 3 = Rear supply port (except for Ø16)
4 Right end-cap supply port 1 = Side supply port (except for Ø16) 2 = Bottom supply port (except for Ø16) 3 = Rear supply port (except for Ø16) 4 = Rear supply ports for both chambers on the right end-cap 5 = Side supply ports for both chambers on the right end-cap (only for Ø16)	5 Bore (mm) 16 = Ø16 25 = Ø25 32 = Ø32 40 = Ø40 50 = Ø50	6 Stroke (mm) Up to 5000 (Ø 16) Up to 6000 (Ø 25÷50)
7 Magnetic M = Magnetic version standard supplied (Ø 16) upon request (Ø 25÷50)	8 ATEX option X = Atex (upon request) See ATEX Catalogue for types and versions	



S1

- Extruded aluminium profile Ø 16 ÷ 50 mm
- Stroke up to 6 m
- Different supply port configurations available
- Different carriage types
- High translation speed 0,2 ÷ 3 m/s

FIXING ELEMENTS AND ACCESSORIES

Ø	Bracket	Angle bracket	Fixing plate	Oscillating bracket	Female threaded connection	Male threaded pin	Female connection without thread	DF sensor and DHF covering strip	Cable clamping for DF sensor	DH sensor	Bracket for DH sensor
16		-	SF-12016	SF-24016	SF-26016	SF-27016	SF-28016	DF	DF-001	-	-
25	-	SF-13025	SF-12025	SF-24025	SF-26025	SF-27025	SF-28025	-	-	DH	DH-S25
32	-	SF-13032	SF-12032	SF-24032	SF-26032	SF-27032	SF-28032	-	-		DH-S32
40	SF-13040	-	SF-12040	SF-24032	SF-26032	SF-27032	SF-28032	-	-		DH-S40
50	SF-13050	-	SF-12050	-	-	-	-	-	-	-	DH-S50