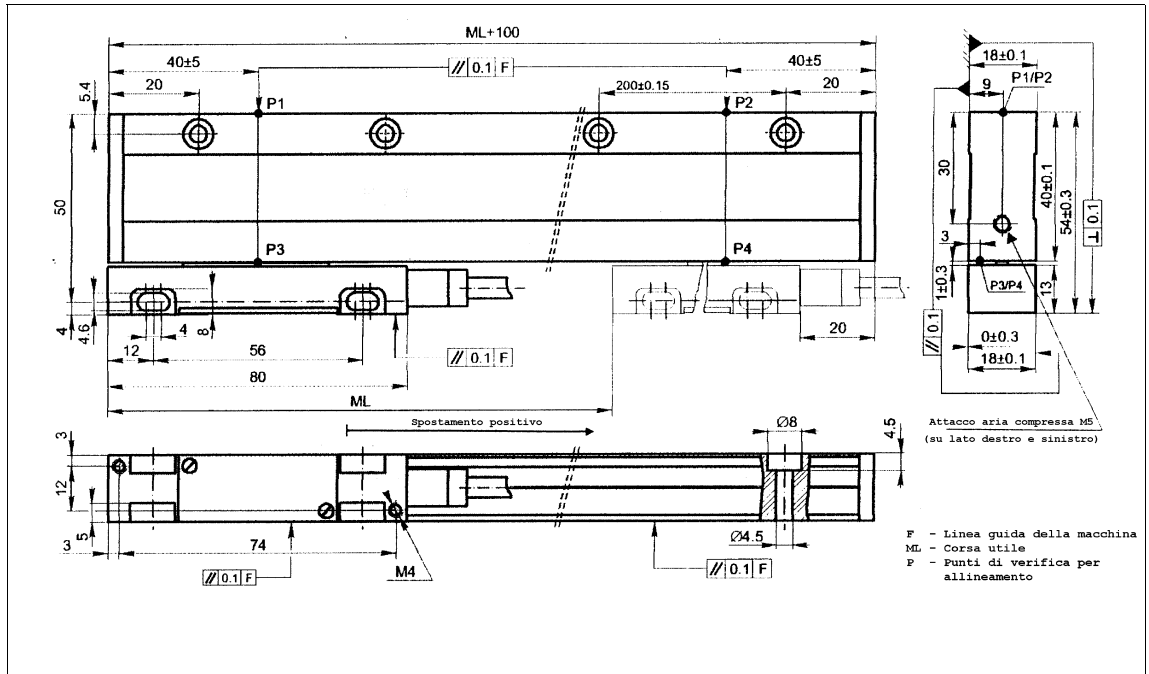


Measures without tolerance according to UNI ISO 2768-mk



TECHNICAL FEATURES AND POSSIBLE CONFIGURATIONS

- Optical linear detector system with a glass measurement scale graduated in photo-etched Cr (pitch 20 μm).
- Weight (head+transducer).....:0,4 kg + 1 kg/m
- Resolution.....:5 μm ; 1 μm ; 0,5 μm (with multiplic. x4)
- Standard stroke.....:70 ÷ 2440 mm (see table on page 2)
- Graduated scale made of special glass with dilatation coefficient similar to machine tools beds.
- Sliding detecting head equipped with special device to keep parallelism with glass line.
- Cover in anodized aluminium.
- Protection.....:standard IP53 ; with compressed air (P) IP64 (°)
- Max reading speed.....:60 m/min max (**)
- Starting force.....:< 3N
- Impact resistance.....:<= 10 G (11 ms)
- Vibration resistance.....:<= 3 G (40 ÷ 2000 Hz)
- Accuracy.....:± 10 μm (opt. ± 5 μm)
- Reference points (zeros).....:1 at the begin and 1 at the end of the stroke (other upon request)
- Max frequency.....:50 kHz ; 500 kHz (with interpol. x10)
- Sensors.....:photodiodes in push-pull
- Light source.....:LED
- Operating temperature.....: 0 ÷ 50 °C
- Storage temperature.....:-20 ÷ 70 °C
- Power supply.....:5V ± 5%
- Max consumption.....:max 120 mA
- Connector output.....:VD (line driver)

(**) Intermittent max RPM + 30% of continuous max RPM

(°) IP accord. to CEI EN 60529, EN 60529, IEC 529 Stand



ELCIS s.r.l. Via Rosa Luxembourg 12/14 10093 COLLEGNO (TO) ITALY
PHONE: +39 011 715577/78 r.a.
MAIL: ELCIS s.r.l. P.O.Box 43 10093 COLLEGNO (TO) ITALY

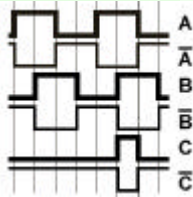
* <http://www.elcis.com>
* e-mail: info@elcis.com
* Fax: +39 011 712613

USEFUL STROKES AND TOTAL LENGTHS

Useful stroke mm	Total lenght mm	Useful stroke mm	Total lenght mm	Useful stroke mm	Total lenght mm	Useful stroke mm	Total lenght mm	Useful stroke mm	Total lenght mm	Useful stroke mm	Total lenght mm
70	170	270	370	620	720	1020	1120	1440	1540	1840	1940
120	220	320	420	720	820	1140	1240	1540	1640	-	2140
170	270	420	520	820	920	1240	1340	1640	1740	-	2340
220	320	520	620	920	1020	1340	1440	1740	1840	-	2540

ELECTRONICS

CODE	DESCRIPTION	mA	CODE	DESCRIPTION	mA	CODE	DESCRIPTION	mA	CODE	DESCRIPTION	mA
N	DRIVER 26LS31 (connector VD - 9c)	20									



Tollerance between phases $\pm 45^\circ$, simmetry $\pm 15^\circ$

ORDERING INFORMATION

(70)(220)(420)(720)(1020)(1340)(1640)(-)
 (120)(270)(520)(820)(1140)(1440)(1740)(-)
 (170)(320)(620)(920)(1240)(1540)(1840)(-)

DRIVER 26LS31 (connector VD - 9c)

()
(N)

FAMILY	OPTIONS	MODEL	USEFUL STROKE (mm)	POWER SUPPLY	VERSION	ELECTRONIC	RESOLUTION
L		RV1854	500	5	BZ	N	5
	(P) PIPE CONNECTION (5) ACCURACY $\pm 5 \mu\text{m}$ (X) CUSTOM OPTIONS			(5) 5V $\pm 5\%$ ()		0,5 μm (05) 1 μm (1) 5 μm (5)	

Product manufactured according to UNI EN ISO 9001:2000, supplied with CHECKING and CONFORMITY declaration with CE mark and with TWO (2) YEARS WARRANTY starting from delivery date.

COPYRIGHT by ELCIS - Collegno (TO)

ELCIS company has the right to make any changings without previous notice.

data sheet IL 005 E00 page:02.RV1854 2/2



ELCIS s.r.l. Via Rosa Luxembourg 12/14 10093 COLLEGNO (TO) ITALY
 PHONE: +39 011 715577/78 r.a.
 MAIL: ELCIS s.r.l. P.O.Box 43 10093 COLLEGNO (TO) ITALY

* <http://www.elcis.com>
 * e-mail: info@elcis.com
 * Fax: +39 011 712613