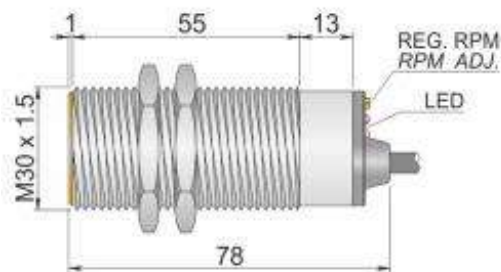
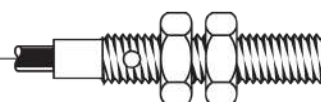


CRC000006 - CRT30-R10 V

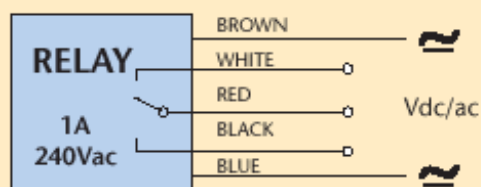


Control type:	Slowdown Control
Detection type:	Inductive (integrated function)
Detectable rotations range (RPM):	High range (120 ÷ 3000 adjustable)
Working voltage:	18 ÷ 50 Vdc / 18 ÷ 240 Vac
Switching distance (Sn):	4 ÷ 6 mm with metallic plate $\geq 30 \times 30 \times 1$
Delayed alarm activation time:	9 ÷ 15 sec
Response time:	0.5 ÷ 0.02 sec
Block function - A:	Programmable
Autoreset function - B:	Programmable
Absorption:	< 20 mA @ relay ON
Output type:	Changeover relay
Max output current:	1A @ 240 Vac
Led indicator:	YELLOW: target detection - RED: Allarm (output state)
Temperature limits:	-20 ÷ +70 °C
IP rating:	IP 65
Connection type:	Cable 3m
Cable type:	5x0.35 PVC
Mechanical characteristics:	M30x1.5
Housing material:	Nickelled brass
Weight:	240 g



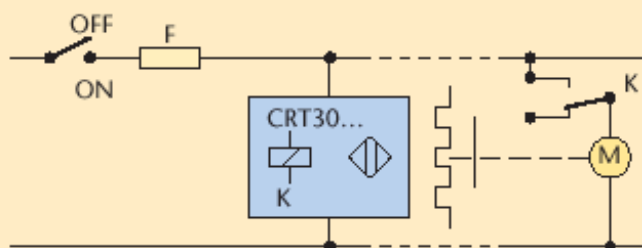
CRC000006 - CRT30-R10 V

WIRING DIAGRAM

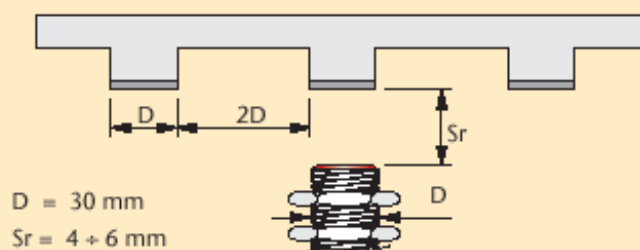


Multivoltage power supply
 $18 \div 50$ Vdc / $18 \div 240$ Vac

TYPICAL WORKING DIAGRAM



INSTRUCTION FOR CORRECT INSTALLATION



200' (61.0m) 170' (51.8m)

100'

100' (30.5m)

50'

100' (30.5m) 100' (30.5m)

50' (15.2m)

25'

25' (7.6m)

10'

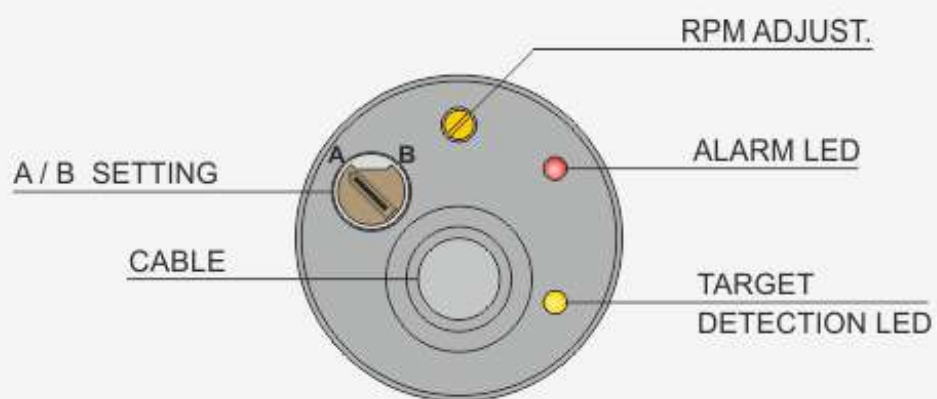
5'

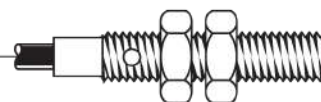
25' (7.6m)

5'

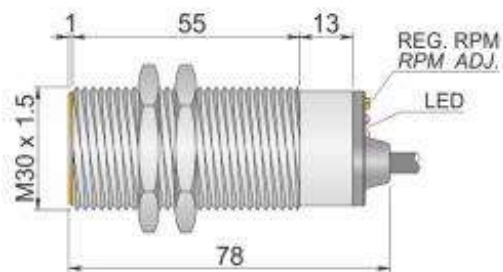
100' (30.5m) 100' (30.5m)

REAR VIEW

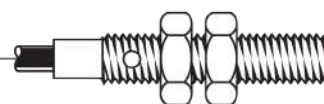




CRC000004 - CRT30-R10 L/V

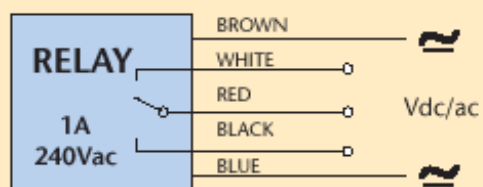


Detection type:	Inductive (integrated function)
Working voltage:	18 ÷ 50 Vdc / 18 ÷ 240 Vac
Switching distance (Sn):	4 ÷ 6 mm with metallic plate >= 30x30x1
Delayed alarm activation time:	9 ÷ 15 sec
Response time:	Depends on the range
Autoreset function - B:	Present
Absorption:	< 20 mA @ relay ON
Output type:	Changeover relay
Max output current:	1A @ 240 Vac
Led indicator:	YELLOW: target detection - RED: Allarm (output state)
Temperature limits:	-20 ÷ +70 °C
IP rating:	IP 65
Connection type:	Cable 3m
Cable type:	5x0.35 PVC
Mechanical characteristics:	M30x1.5
Housing material:	Nickelled brass
Weight:	330 g



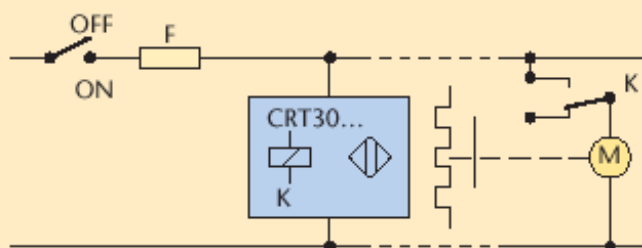
CRC000004 - CRT30-R10 L/V

WIRING DIAGRAM

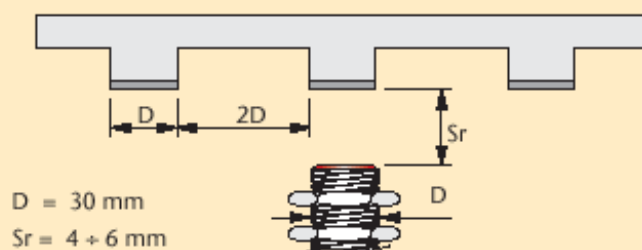


Multivoltage power supply
 $18 \div 50$ Vdc / $18 \div 240$ Vac

TYPICAL WORKING DIAGRAM



INSTRUCTION FOR CORRECT INSTALLATION



200' (61.0m) 170' (51.8m)

100'

100' (30.5m)

50'

100' (30.5m) 100' (30.5m)

50' (15.2m)

25'

25' (7.6m)

10'

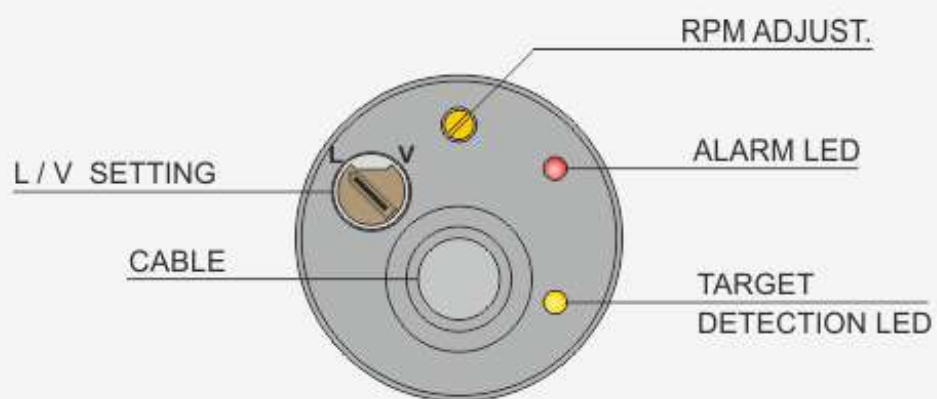
5'

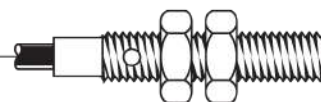
25' (7.6m)

5'

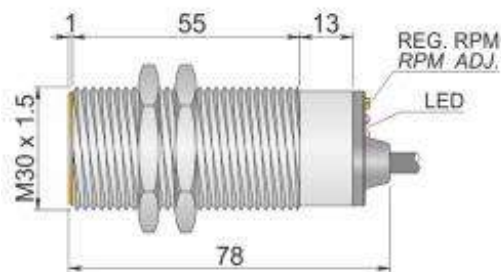
100' (30.5m) 100' (30.5m)

REAR VIEW

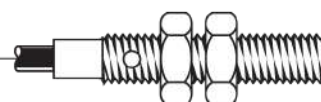




CRC000005 - CRT30-R10 L

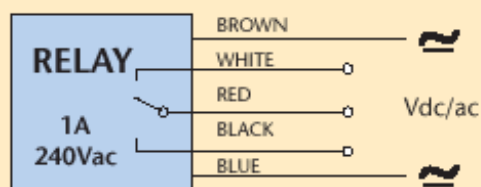


Control type:	Slowdown Control
Detection type:	Inductive (integrated function)
Detectable rotations range (RPM):	Low range (6 ÷ 150 adjustable)
Working voltage:	18 ÷ 50 Vdc / 18 ÷ 240 Vac
Switching distance (Sn):	4 ÷ 6 mm with metallic plate $\geq 30 \times 30 \times 1$
Delayed alarm activation time:	9 ÷ 15 sec
Response time:	10 ÷ 0.4 sec
Block function - A:	Programmable
Autoreset function - B:	Programmable
Absorption:	< 20 mA @ relay ON
Output type:	Changeover relay
Max output current:	1A @ 240 Vac
Led indicator:	YELLOW: target detection - RED: Allarm (output state)
Temperature limits:	-20 ÷ +70 °C
IP rating:	IP 65
Connection type:	Cable 3m
Cable type:	5x0.35 PVC
Mechanical characteristics:	M30x1.5
Housing material:	Nickelled brass
Weight:	150 g



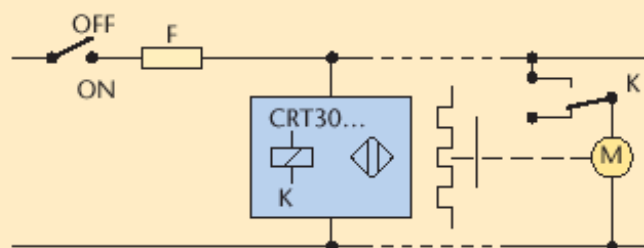
CRC000005 - CRT30-R10 L

WIRING DIAGRAM

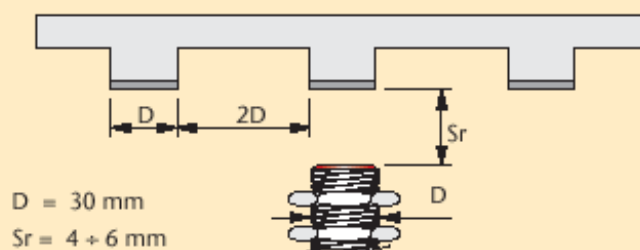


Multivoltage power supply
 $18 \div 50$ Vdc / $18 \div 240$ Vac

TYPICAL WORKING DIAGRAM



INSTRUCTION FOR CORRECT INSTALLATION



200' (61.0m) 170' (51.8m)

100'

100' (30.5m)

50'

100' (30.5m) 100' (30.5m)

50' (15.2m)

25'

25' (7.6m)

10'

5'

25' (7.6m)

2'

100' (30.5m) 100' (30.5m)

REAR VIEW

